

Écoute le son qui commence le mot, colorie la syllabe qui correspond à ce son.



chau	chou
chon	chai
cha	chi

bou	bai
bon	bau
bé	ba

ra	ru
rou	rai
ron	rau

mou	mau
mai	mon
mi	ma

Écoute le son qui commence le mot, colorie la syllabe qui correspond à ce son.

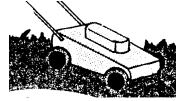


chau	chou
chon	chai
cha	chi

bou	bai
bon	bau
bé	ba

ra	ru
rou	rai
ron	rau

mou	mau
mai	mon
mi	ma

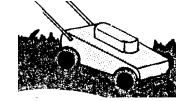


ni	nou
non	na
nau	nai

sai	sau
sa	son
sou	su

tou	ton
tau	ta
tai	ti

rai	rau
ru	ri
rou	ron



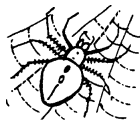
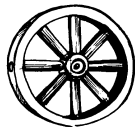
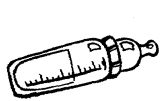
ni	nou
non	na
nau	nai

sai	sau
sa	son
sou	su

tou	ton
tau	ta
tai	ti

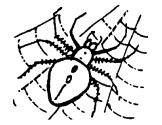
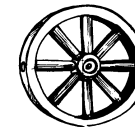
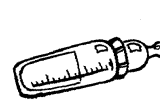
rai	rau
ru	ri
rou	ron

rou ri ron ra rai ru



bi be e a gnée

rou ri ron ra rai ru



bi be e a gnée



che deau pi te



che deau pi te